



MILLING ACCESSORIES

COLLET ADAPTOR



Available in : ISO Taper (ISO-30, 40 & 50),
R8 Taper (M1TR), MORSE Taper
(MT-2, 3, 4, 5, & 6)
Suitable for : E Type Collets (Schaublin & Tail)

STUB MILLING ARBOUR



For Holding, Face Mills, & Shell,
End Mills in, ISO Taper,
R8 Taper (M1TR) & MORSE Taper.

REDUCTION SOCKETS



ISO to ISO (eg. ISO 50 - ISO 40)
ISO to MT (eg. ISO-40 MT-3)
R8 (M1TR) to MT (eg. R8 MT-2)
Drill Sleeve (eg. MT 2-3 or MT 3-4)

SIDE LOCK HOLDERS



Available in : ISO Taper, R8 Taper,
BT Taper

SAI TRUMAN ENTERPRISES

www.saitruman.in

CHUCKS



Quick Change Chucks,
Quick Change Chuck Collets
Floating Reamer Holder

DRILL CHUCK ARBOURS



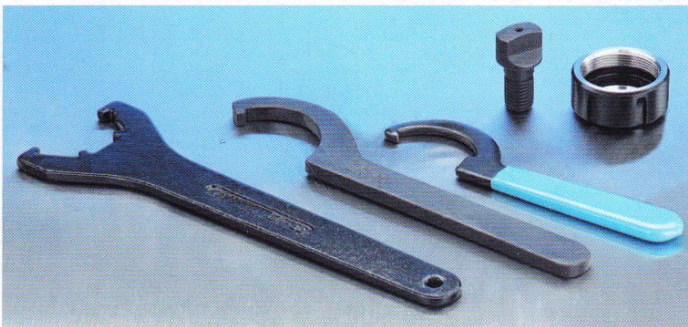
Available in : MORSE Taper, R8 Taper (M1TR), ISO Taper

COLLETS



Available in: E Type (Both Tail & Schaublin), R8 Taper (M1TR)

SPARES



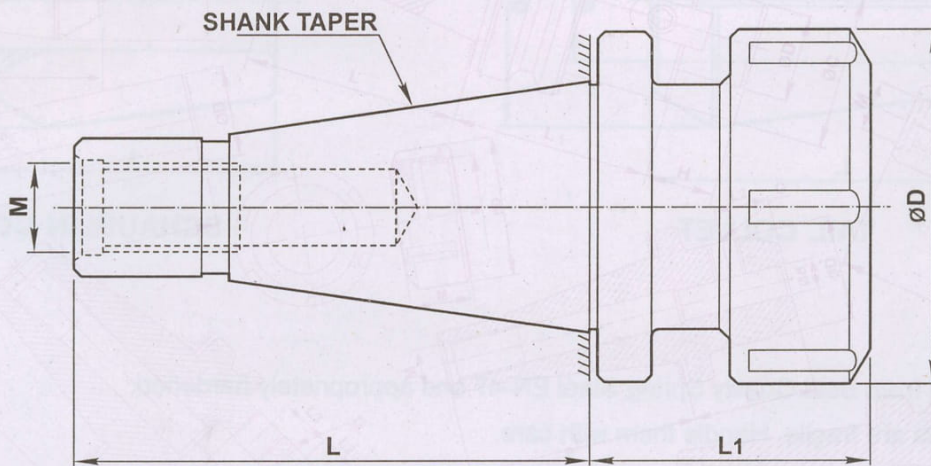
Spanners : Spanners for Collet Adaptor,
Both C Hook & Regofix Type
Spare Tang : To Convert Draw Bolt Taper
Adaptor to Tang Type



MILLING ACCESSORIES
& CNC TOOL HOLDERS
'A' GRADE

CATALOGUE No.: 101
DATE: 01-12-2006

COLLET ADAPTORS (IN ISO TAPER) FOR 'E' TYPE COLLETS



- # Made from 20MnCr5 & Case Hardened to 55-58 HRc approx.
- # Precision ground to an Accuracy of 0.015 mm TIR.
- # For best result : Always insist on Trumil make Collets.
- # Use C Hook Spanner to avoid breakages.
- # Suitable for both Tail & Schaublin type Collets.

MODEL No.	SHANK TAPER	SUITABLE FOR COLLET	L mm	L1 mm	ØD mm	M
ISO - 30 E - 32	ISO - 30	E - 32	68.4	68	54	M12
ISO - 30 E - 40	ISO - 30	E - 40	68.4	90	65	M12
ISO - 40 E - 32	ISO - 40	E - 32	93.4	40	54	M16
ISO - 40 E - 40	ISO - 40	E - 40	93.4	55	65	M16
ISO - 40 E - 45	ISO - 40	E - 45	93.4	65	72	M16
ISO - 50 E - 40	ISO - 50	E - 40	126.8	55	65	M24
ISO - 50 E - 45	ISO - 50	E - 45	126.8	60	72	M24

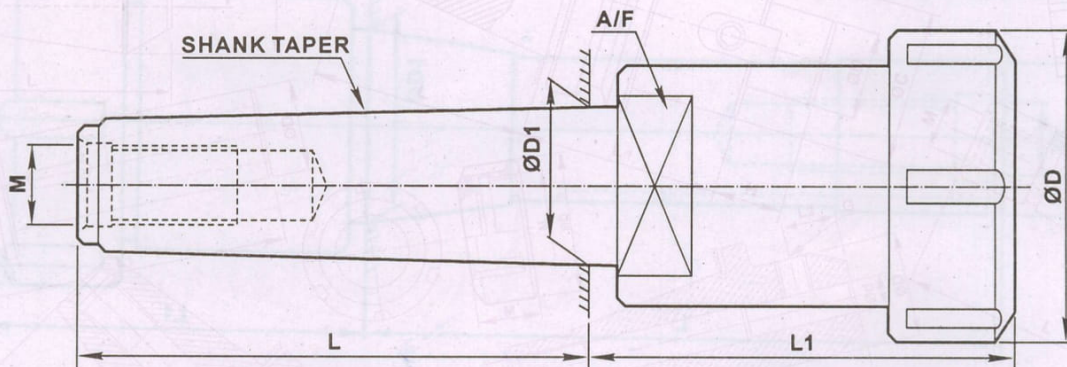
ORDER BY : MODEL No. Eg. Milling Collet Adaptor ISO - 40 E - 40



MILLING ACCESSORIES
& CNC TOOL HOLDERS
'A' GRADE

CATALOGUE No.: 105
DATE: 01- 12 - 2006

COLLET ADAPTOR (IN MORSE TAPER) FOR 'E' TYPE COLLETS



- # Made from 20MnCr5 & Case Hardened to 55-58 HRC approx.
- # Precision Ground to an Accuracy of .015 mm TIR.
- # For best result : Always insist on Trumil make Collets.
- # Use C Hook Spanner to avoid breakages.
- # Suitable for both Tail & Schaublin type Collets.
- # Standard Collet Adaptor supplied are of Draw bolt type.
- # Tang type Collet Adaptor supplied only against specific request at extra cost.
- # Cotter slot can be provided in Tang type Collet Adaptor against request at extra cost.

MODEL No.	SHANK TAPER	SUITABLE FOR COLLET	L mm	L1 mm	ØD mm	ØD1 mm	M	A/F mm
MT - 2 E - 32	MT - 2	E - 32	64.0	80	54	17.780	M10	24
MT - 2 E - 40	MT - 2	E - 40	64.0	87	63	17.780	M10	24
MT - 3 E - 32	MT - 3	E - 32	81.0	80	54	23.825	M12	24
MT - 3 E - 40	MT - 3	E - 40	81.0	87	63	23.825	M12	24
MT - 4 E - 32	MT - 4	E - 32	102.5	69	54	31.267	M16	32
MT - 4 E - 40	MT - 4	E - 40	102.5	91	63	31.267	M16	32
MT - 4 E - 45	MT - 4	E - 45	102.5	96	68	31.267	M16	32
MT - 5 E - 40	MT - 5	E - 40	129.5	97	63	44.399	M20	45
MT - 5 E - 45	MT - 5	E - 45	129.5	101	68	44.399	M20	45

ORDER BY : MODEL No. Eg. Collet Adaptor MT - 4 E - 40 (which means drawbolt type collet adaptor will be supplied) OR
Collet Adaptor MT - 4 E - 40 Tang type OR
Collet Adaptor MT - 4 E - 40 Tang type with Cotter Slot.

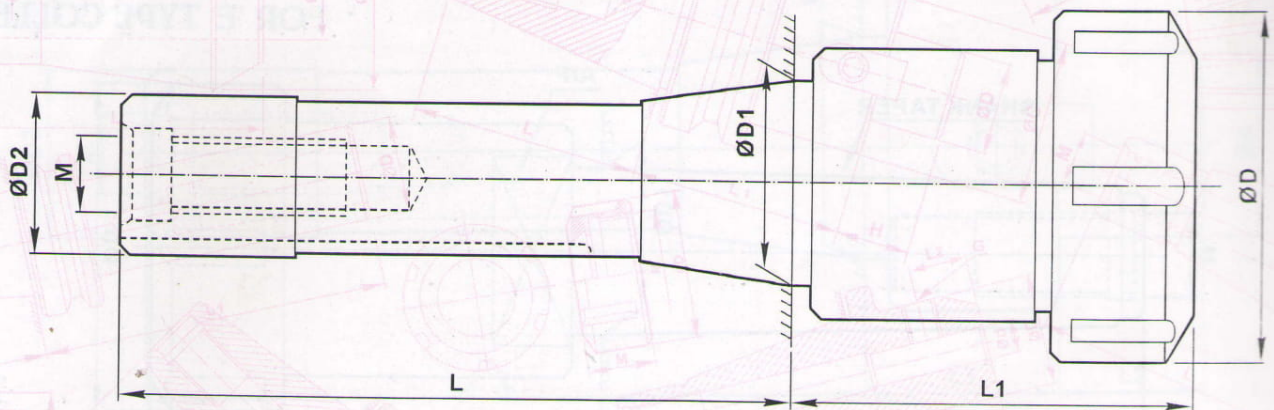


CATALOGUE No.: 105
DATE: 01- 12 - 2006

COLLET ADAPTOR (IN R8 TAPER)

FOR 'E' TYPE COLLETS

(For Bridgeport & HMT M1TR Vertical Ram Turret type Milling Machines)



- # Made from 20MnCr5 & Case Hardened to 55-58 HRc approx.
- # Precision Ground to an Accuracy of .015 mm TIR.
- # For best result : Always insist on Trumil make Collets.
- # Use C Hook Spanner to avoid breakages.
- # Suitable for both Tail & Schaublin type Collets.

MODEL No.	SUITABLE FOR COLLET	L mm	L1 mm	ØD mm	ØD1 mm	ØD2 mm	M
R8 E - 32	E - 32	102.3	72	54	31.750	24.1	M12 X 1.5
R8 E - 40	E - 40	102.3	76	63	31.750	24.1	

ORDER BY : MODEL No. Eg. Collet Adaptor R8 E - 40 (M12 X 1.5)

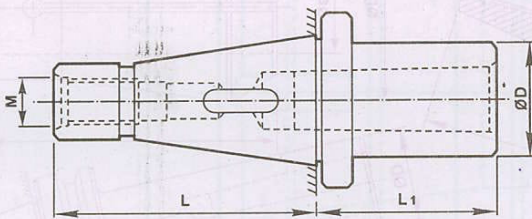


MILLING ACCESSORIES
& CNC TOOL HOLDERS

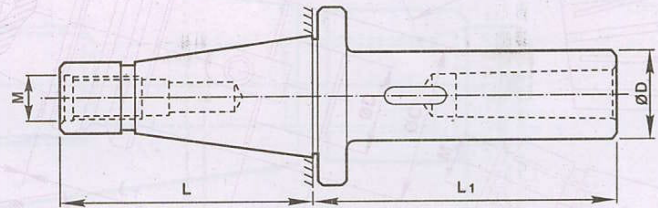
'A' GRADE

CATALOGUE No.: 109
DATE: 01 - 12 - 2006

MILLING REDUCTION SOCKET (ISO-MT : TYPE A)



STANDARD FIG : 1



EXTENDED FIG : 2

- # Made from 20MnCr5 & Case Hardened to 55-58 HRC approx.
- # Precision Ground to an Accuracy of .015 mm TIR.
- # Specifications Confirm to IS : 5927 - 1981
- # Application : Suitable to hold Morse Taper Shank Tools with Tang.

MODEL No.	L mm	L1 mm	ØD mm	INTERNAL TAPER	M
ISO - 30 MT - 1 A	68.4	50	25	MT - 1	M12
ISO - 30 MT - 1 A (Extended)	68.4	93	25	MT - 1	M12
ISO - 30 MT - 2 A	68.4	50	32	MT - 2	M12
ISO - 30 MT - 2 A (Extended)	68.4	108	32	MT - 2	M12
ISO - 30 MT - 3 A	68.4	70	40	MT - 3	M12
ISO - 30 MT - 3 A (Extended)	68.4	128	40	MT - 3	M12
ISO - 40 MT - 1 A	93.4	50	25	MT - 1	M16
ISO - 40 MT - 1 A (Extended)	93.4	95	25	MT - 1	M16
ISO - 40 MT - 2 A	93.4	50	32	MT - 2	M16
ISO - 40 MT - 2 A (Extended)	93.4	110	32	MT - 2	M16
ISO - 40 MT - 3 A	93.4	65	40	MT - 3	M16
ISO - 40 MT - 3 A (Extended)	93.4	130	40	MT - 3	M16
ISO - 40 MT - 4 A	93.4	95	48	MT - 4	M16
ISO - 40 MT - 4 A (Extended)	93.4	155	48	MT - 4	M16
ISO - 50 MT - 1 A	126.8	43	25	MT - 1	M24
ISO - 50 MT - 1 A (Extended)	126.8	95	25	MT - 1	M24
ISO - 50 MT - 2 A	126.8	60	32	MT - 2	M24
ISO - 50 MT - 2 A (Extended)	126.8	109	32	MT - 2	M24
ISO - 50 MT - 3 A	126.8	65	40	MT - 3	M24
ISO - 50 MT - 3 A (Extended)	126.8	131	40	MT - 3	M24
ISO - 50 MT - 4 A	126.8	70	48	MT - 4	M24
ISO - 50 MT - 4 A (Extended)	126.8	157	48	MT - 4	M24
ISO - 50 MT - 5 A	126.8	105	63	MT - 5	M24
ISO - 50 MT - 5 A (Extended)	126.8	189	63	MT - 5	M24

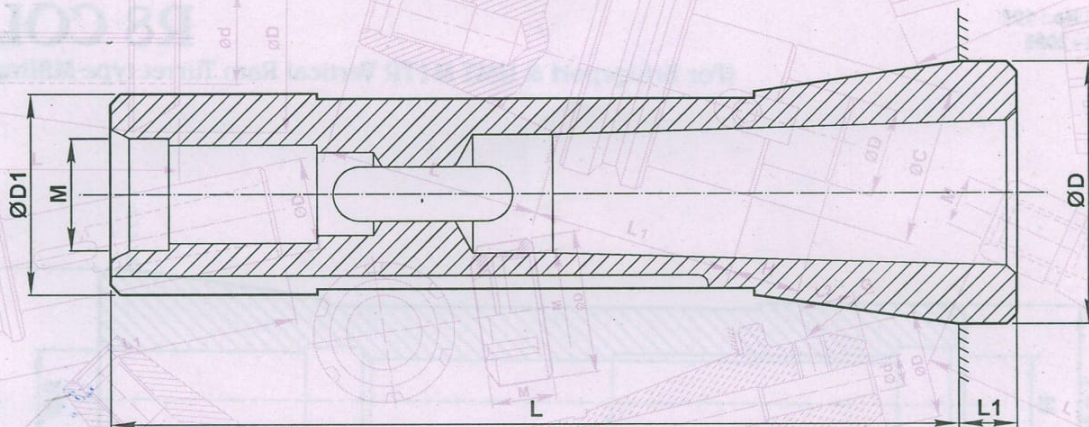
ORDER BY : MODEL No. Eg. Milling Reduction Socket ISO - 40 MT - 2 A OR
Milling Reduction Socket ISO - 40 MT - 2 A Extended



CATALOGUE No.: 102
DATE: 01 - 12 - 2006

MILLING REDUCTION SOCKET (IN R8 TAPER)

(For Bridgeport & HMT M1TR Vertical Ram Turret type Milling Machines)



Made from 20MnCr5 & Case Hardened to 55-58 HRC approx.

MODEL NO.	ØD mm	ØD1 mm	L mm	L1 mm	M
R8 MT - 1	31.750	24.1	102.3	8.7	M12 X 1.5 OR 7/16" UNF
R8 MT - 2	31.750	24.1	102.3	8.7	
R8 MT - 3	31.750	24.1	102.3	67.7	

ORDER BY : MODEL No. X REAR TAPPING-M. Eg. Milling Reduction Socket R8 X MT - 2 (M12 X 1.5) OR
Milling Reduction Socket R8 X MT - 2 (7/16" UNF)

STANDARD FIG : 1

EXTENDED



CATALOGUE No.: 112
DATE: 01-12-2006

SIDE LOCK HOLDER (WELDON TYPE IN ISO TAPER)

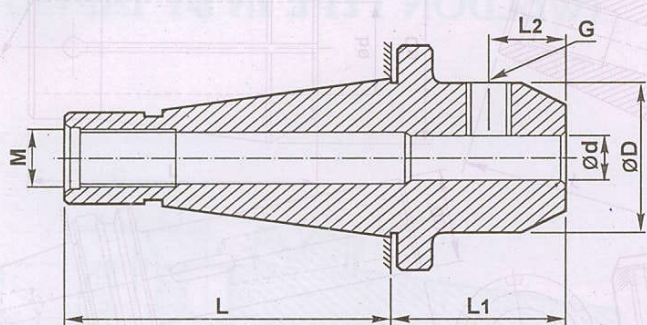


FIG.: 1

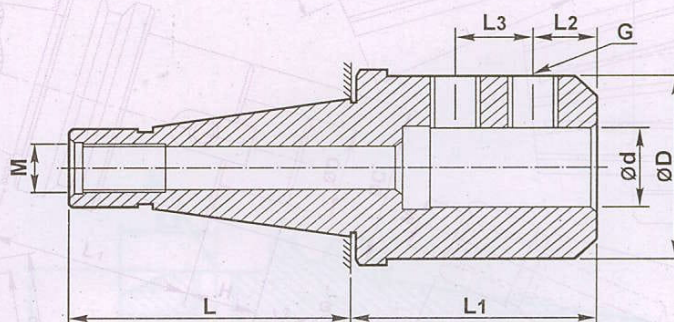


FIG.: 2

MODEL No.	ød mm	øD mm	L mm	L1 mm	L2 mm	L3 mm	G	M	FIG.
ISO - 30 X 12 mm	12	42	68.4	40	22.0	-	M10	M12	1
ISO - 30 X 16 mm	16	48	68.4	50	23.5	-	M12	M12	1
ISO - 30 X 20 mm	20	52	68.4	63	24.5	-	M16	M12	1
ISO - 40 X 12 mm	12	42	93.4	50	22.0	-	M10	M16	1
ISO - 40 X 16 mm	16	48	93.4	63	23.5	-	M12	M16	1
ISO - 40 X 20 mm	20	52	93.4	63	24.5	-	M16	M16	1
ISO - 40 X 25 mm	25	63	93.4	80	23.5	25	M16	M16	2
ISO - 40 X 32 mm	32	72	93.4	80	23.5	28	M20	M16	2
ISO - 50 X 12 mm	12	42	126.8	63	22.0	-	M10	M24	1
ISO - 50 X 16 mm	16	48	126.8	63	23.5	-	M12	M24	1
ISO - 50 X 20 mm	20	52	126.8	63	24.5	-	M16	M24	1
ISO - 50 X 25 mm	25	65	126.8	80	23.5	25	M16	M24	2
ISO - 50 X 32 mm	32	72	126.8	80	23.5	28	M20	M24	2

ORDER BY : MODEL No. Eg. Side Lock Holder ISO - 40 X 25 mm



CATALOGUE No.: 109
DATE: 01 - 03 - 2012

SIDE LOCK HOLDER (WELDON TYPE IN R8 TAPER)

(For Bridgeport & HMT M1TR Vertical ram Turret Type Milling Machine)

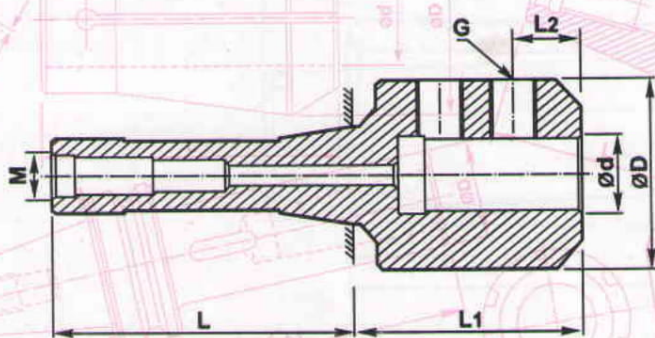


FIG.: 1

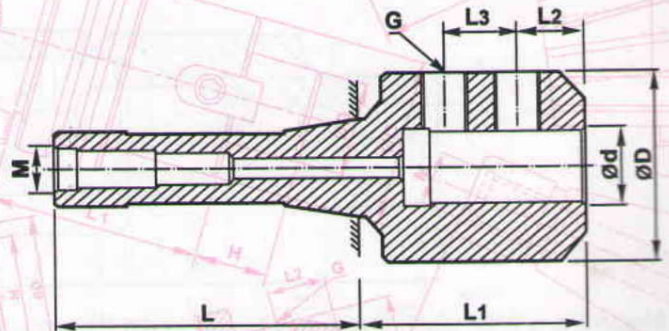


FIG.: 2

Made from 20MnCr5. & Case hardened to 55-58 HRc. approx.

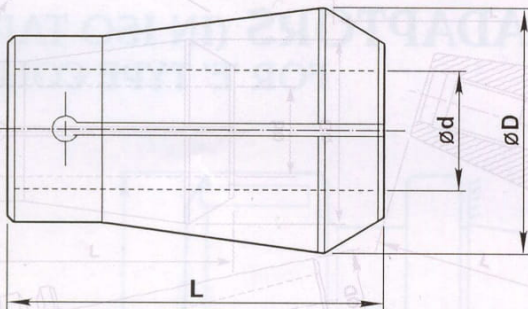
MODEL No.	$\varnothing d$ mm	$\varnothing D$ mm	L mm	L ₁ mm	L ₂ mm	L ₃ mm	G	M	FIG.
R8 12 mm	12	42	102.3	48.7	22.0	-	M12	M12 x 1.5	1
R8 16 mm	16	48	102.3	63.7	23.5	-	M12	M12 x 1.5	1
R8 20 mm	20	52	102.3	70.7	24.5	-	M16	M12 x 1.5	1
R8 25 mm	25	63	102.3	79.7	23.5	25	M16	M12 x 1.5	2

ORDER BY : MODEL No. Eg. Side Lock Holder R8 X 25 mm

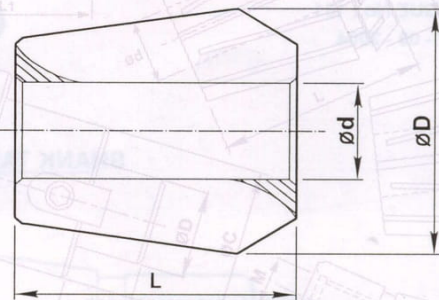


CATALOGUE No.: 101
DATE: 01 - 09 - 2001

COLLETS E TYPE : SCHAUBLIN & TAIL



TAIL COLLET



SCHAUBLIN COLLET

- # Made from Best Quality Spring Steel EN-47 and appropriately hardened.
- # Collets are fragile. Handle them with care.
- # Collets falling from hand may lead to their breakage.
- # Use correct Bore size of Collet.

MODEL No.	ØD mm	L mm	BORE SIZES - ød
E - 32 SCHAUBLIN	32	40	5, 6, 8, 10, 12, 16, 20 mm 1/4", 3/8", 1/2", 5/8", 3/4"
E - 40 SCHAUBLIN	40	46	5 - 25mm IN STEPS OF 1mm 1/4" - 1" IN STEPS OF 1/16"
E - 40 TAIL	40	61	6 - 25mm IN STEPS OF 1mm 1/4" - 1" IN STEPS OF 1/16"
E - 45 SCHAUBLIN	45	50	6, 8, 10, 12, 16, 20, 25, 28, 32 mm 1/4", 3/8", 1/2", 5/8", 3/4", 7/8", 1", 1-1/4"

ORDER BY : MODEL No. eg.: E - 40 Schaublin Collet 8 mm Or E - 40 Tail Collet 8 mm

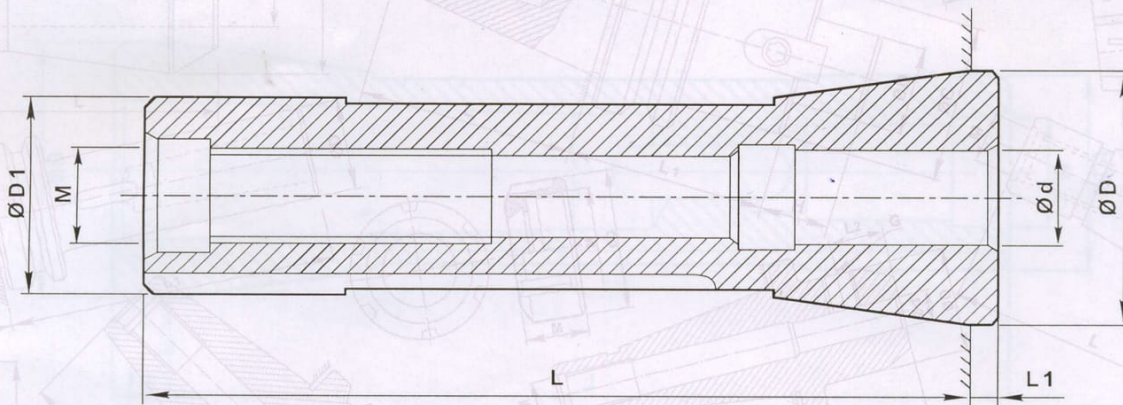


MACHINE TOOL ACCESSORIES
 "A" GRADE
 "HOUSE OF PRECISION TOOLS"

CATALOGUE No.: 102
 DATE: 01-09 - 2004

R8 COLLETS

(For Bridgeport & HMT M1TR Vertical Ram Turret type Milling Machines)



Made from best quality Spring Steel EN - 47 & appropriately hardened.

Collets are fragile. Handle them with care.

Collets falling from hand may lead to their breakage.

Use correct Bore Size. Max. collapse 0.030 mm on nominal size.

BORE SIZES $\varnothing d$	$\varnothing D$ mm	$\varnothing D1$ mm	L mm	L1 mm	M
5 to 16 mm in steps of 1 mm 1/4" to 5/8" in steps of 1/16"	31.750	24.1	102.3	3.7	M12 X 1.5 INDIAN MARKET
					7/16" UNF REST OF THE MARKET

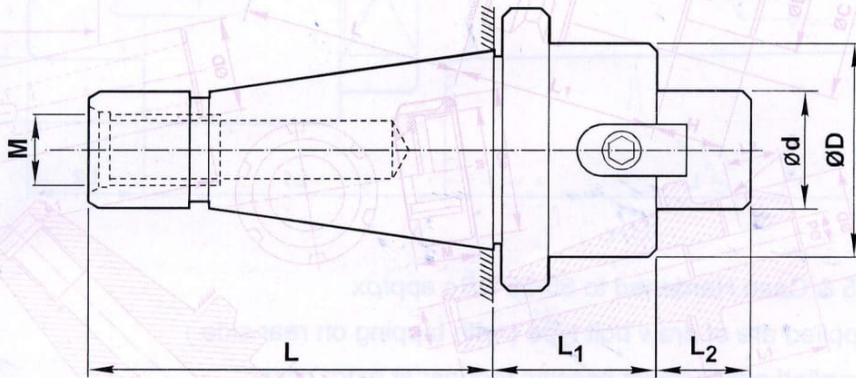
ORDER BY : MODEL No. eg.: R8 Collet : 10 mm (M12 X 1.5)
 OR R8 Collet : 10 mm (7/16" UNF)



MILLING ACCESSORIES
& CNC TOOL HOLDERS
'A' GRADE

CATALOGUE No.: 107
DATE: 01 - 12 - 2006

FACE MILL ARBOUR
(IN ISO TAPER)
(FOR CUTTER $\varnothing < 160$ mm)



- # Made from 20MnCr5 & Case Hardened to 55-58 HRc approx.
- # Precision Ground to an Accuracy of .015 mm TIR.
- # Specifications Confirm to IS : 8615 - 1977

MODEL No.	SHANK TAPER	L mm	L1 mm	L2 mm	ød mm h6	ØD mm	M
ISO - 30 X 16mm	ISO - 30	68.4	34.6	17	16	32	M12
ISO - 30 X 22mm	ISO - 30	68.4	34.6	19	22	40	M12
ISO - 30 X 27mm	ISO - 30	68.4	34.6	21	27	48	M12
ISO - 40 X 16mm	ISO - 40	93.4	36.6	17	16	32	M16
ISO - 40 X 22mm	ISO - 40	93.4	36.6	19	22	40	M16
ISO - 40 X 27mm	ISO - 40	93.4	36.6	21	27	48	M16
ISO - 40 X 32mm	ISO - 40	93.4	51.6	24	32	58	M16
ISO - 40 X 40mm	ISO - 40	93.4	51.6	27	40	68	M16
ISO - 50 X 16mm	ISO - 50	126.8	40.2	17	16	32	M24
ISO - 50 X 22mm	ISO - 50	126.8	40.2	19	22	40	M24
ISO - 50 X 27mm	ISO - 50	126.8	55.2	21	27	48	M24
ISO - 50 X 32mm	ISO - 50	126.8	55.2	24	32	58	M24
ISO - 50 X 40mm	ISO - 50	126.8	55.2	27	40	70	M24

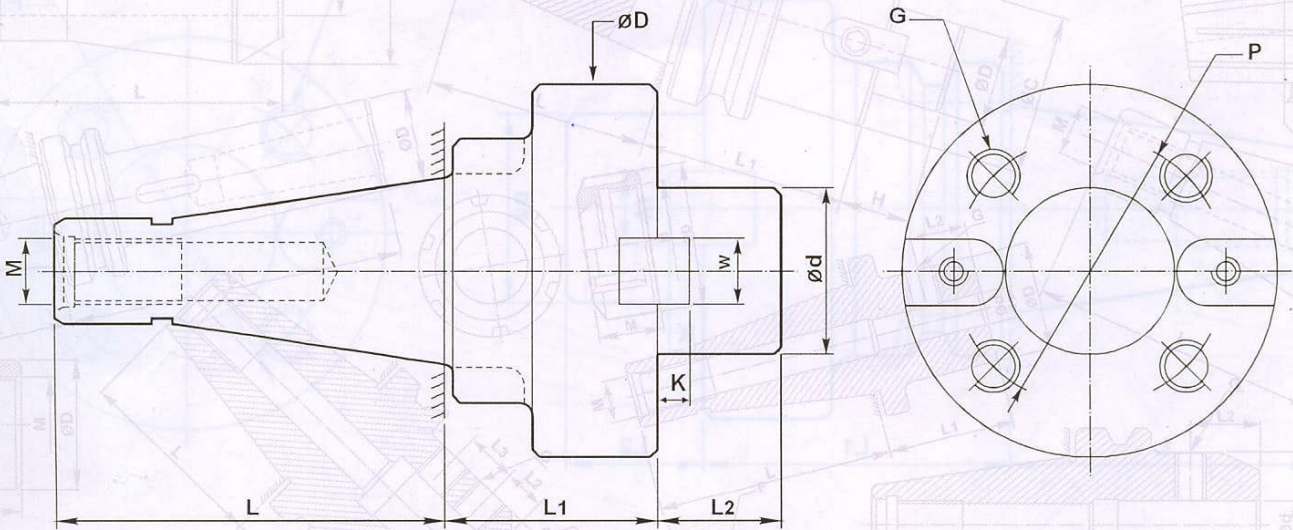
ORDER BY : MODEL No. Eg. Stub Milling Arbour ISO - 40 X 27mm



MACHINE TOOL ACCESSORIES
 "A" GRADE
 "HOUSE OF PRECISION TOOLS"

CATALOGUE No.: 107 A
 DATE: 01-09 - 2004

FACE MILL ARBOUR (IN ISO TAPER) (FLANGE TYPE FOR CUTTER $\varnothing > 160$ mm)



- # Made from 16MnCr5 & Case Hardened to 55-58 HRc approx.
- # Precision ground to an Accuracy of 0.015 mm TIR.
- # Specifications Confirm to IS : 8615-1977

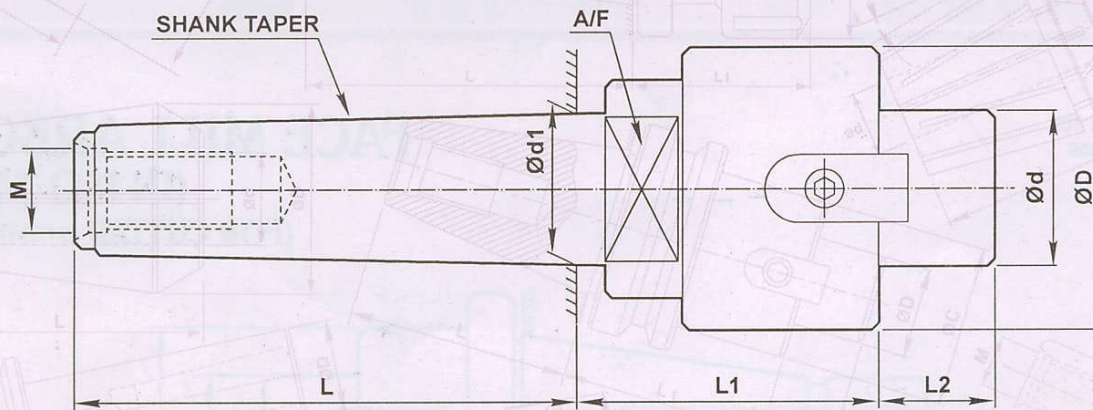
MODEL	SHANK TAPER	L mm	L1 mm	L2 mm	$\varnothing d$ h6 mm	$\varnothing D$ mm	W mm	K mm	P mm	G mm	M
ISO - 40 X 40 mm Flange Type	ISO - 40	93.4	50.6	30	40	90	16	8.5	66.7	M12	M16
ISO - 40 X 60 mm Flange Type	ISO - 40	93.4	51.6	40	60	134	25.4	12.5	101.6	M16	M16
ISO - 50 X 40 mm Flange Type	ISO - 50	126.8	45.2	30	40	90	16	8.5	66.7	M12	M24
ISO - 50 X 60 mm Flange Type	ISO - 50	126.8	60.2	40	60	134	25.4	12.5	101.6	M16	M24

ORDER BY : MODEL No. eg.: Face Mill Arbour ISO - 40 X 40 mm Flange Type.



CATALOGUE No.: 107
DATE: 01 - 12 - 2006

FACE MILL ARBOUR (IN MORSE TAPER)



- # Made from 20MnCr5 & Case Hardened to 55-58 HRc approx.
- # Standard arbour supplied are of draw bolt type (with tapping on rear side)
- # Tang type arbour supplied only against specific request at extra cost.
- # Cotter slot can be provided in Tang type arbours against request at extra cost.

MODEL No.	SHANK TAPER	L mm	L1 mm	L2 mm	Ød1 mm	Ød mm	ØD mm	A/F mm	M
MT-3 X 16 mm	MT - 3	81.0	46.0	17	23.825	16	32	24	M12
MT-3 X 22 mm	MT - 3	81.0	46.0	19	23.825	22	40	24	M12
MT-3 X 27 mm	MT - 3	81.0	46.0	21	23.825	27	48	24	M12
MT-4 X 16 mm	MT - 4	102.5	51.5	17	31.267	16	32	32	M16
MT-4 X 22 mm	MT - 4	102.5	51.5	19	31.267	22	40	32	M16
MT-4 X 27 mm	MT - 4	102.5	51.5	21	31.267	27	48	32	M16
MT-4 X 32 mm	MT - 4	102.5	62.5	24	31.267	32	58	32	M16
MT-4 X 40 mm	MT - 4	102.5	62.5	27	31.267	40	68	32	M16
MT-5 X 16 mm	MT - 5	129.5	56.5	17	44.399	16	32	45	M20
MT-5 X 22 mm	MT - 5	129.5	56.5	19	44.399	22	40	45	M20
MT-5 X 27 mm	MT - 5	129.5	71.5	21	44.399	27	48	45	M20
MT-5 X 32 mm	MT - 5	129.5	71.5	24	44.399	32	58	45	M20
MT-5 X 40 mm	MT - 5	129.5	71.5	27	44.399	40	68	45	M20

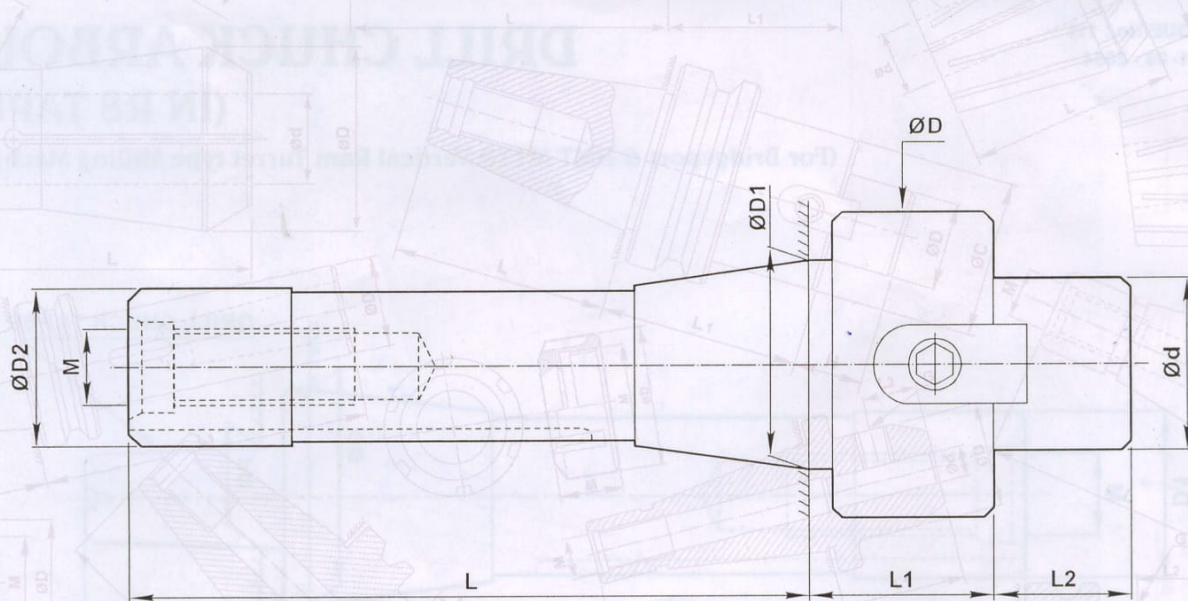
ORDER BY : MODEL No. Eg. Face Mill Arbour MT- 4 X 27 mm (Which means drawbolt type arbour will be supplied)
OR Face Mill Arbour MT- 4 X 27 mm Tang Type.
OR Face Mill Arbour MT- 4 X 27 mm Tang Type with Cotter slot.



CATALOGUE No.: 111
DATE: 01 - 09 - 2004

FACE MILL ARBOUR (IN R8 TAPER)

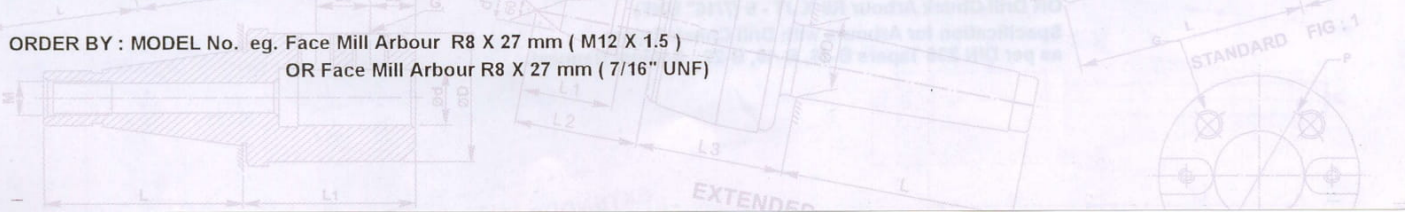
(For Bridgeport & HMT M1TR Vertical Ram Turret type Milling Machines)



Made from 16MnCr5 & Case Hardened to 55-58 HRc approx.

MODEL No.	Ød mm	ØD mm	ØD1 mm	ØD2 mm	L mm	L1 mm	L2 mm	M
R8 X 16 mm	16	32	31.750	24.1	102.3	28.7	17	M12 X 1.5 INDIAN MARKET
R8 X 22 mm	22	40	31.750	24.1	102.3	28.7	19	
R8 X 27 mm	27	48	31.750	24.1	102.3	28.7	21	
R8 X 32 mm	32	58	31.750	24.1	102.3	43.7	24	7/16" UNF REST OF THE MARKET
R8 X 40 mm	40	68	31.750	24.1	102.3	47.7	27	

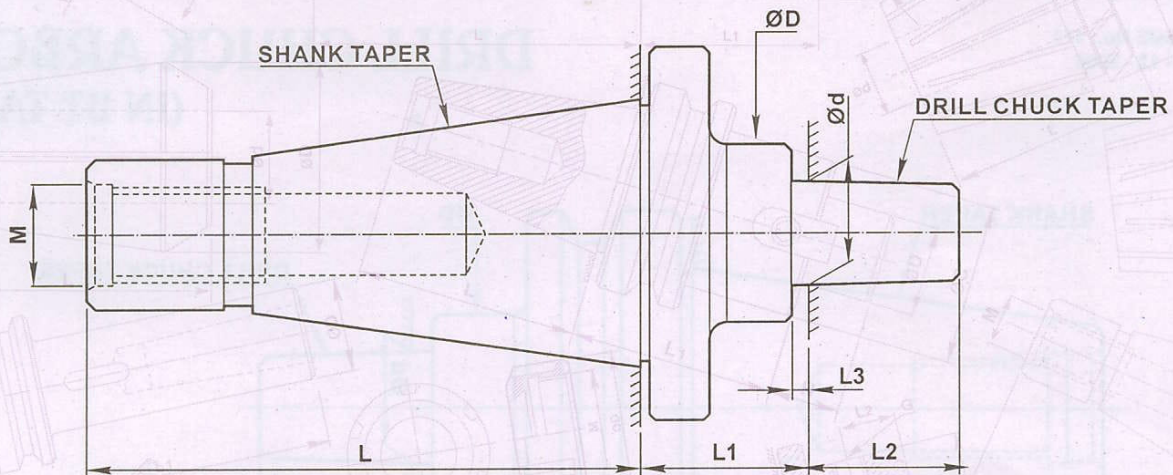
ORDER BY : MODEL No. eg. Face Mill Arbour R8 X 27 mm (M12 X 1.5)
OR Face Mill Arbour R8 X 27 mm (7/16" UNF)





CATALOGUE No.: 110
DATE: 01 - 12 - 2006

DRILL CHUCK ARBOUR (IN ISO TAPER)



Made from 20MnCr5 & Case Hardened to 55-58 HRC approx.

MODEL No.	SHANK TAPER	DRILL CHUCK TAPER	L mm	L1 mm	L2 mm	L3 mm	Ød mm	ØD mm	M
ISO - 30 JT - 2S	ISO - 30	JT - 2	68.4	29.4	19.050	3.5	13.940	30	M12
ISO - 30 JT - 3	ISO - 30	JT - 3	68.4	28.6	30.960	5.0	20.599	35	M12
ISO - 30 JT - 6	ISO - 30	JT - 6	68.4	26.4	24.500	3.8	17.170	30	M12
ISO - 30 B16	ISO - 30	B16	68.4	27.6	24.000	5.0	15.733	30	M12
ISO - 30 B18	ISO - 30	B18	68.4	28.6	32.000	5.0	17.780	35	M12
ISO - 40 JT - 2S	ISO - 40	JT - 2	93.4	31.4	19.050	3.5	13.940	30	M16
ISO - 40 JT - 3	ISO - 40	JT - 3	93.4	30.6	30.960	5.0	20.599	35	M16
ISO - 40 JT - 6	ISO - 40	JT - 6	93.4	28.4	24.500	3.8	17.170	30	M16
ISO - 40 B16	ISO - 40	B16	93.4	29.6	24.000	5.0	15.733	30	M16
ISO - 40 B18	ISO - 40	B18	93.4	30.6	32.000	5.0	17.780	35	M16
ISO - 50 JT - 2S	ISO - 50	JT - 2	126.8	33.4	19.050	3.5	13.940	30	M24
ISO - 50 JT - 3	ISO - 50	JT - 3	126.8	32.6	30.960	5.0	20.599	35	M24
ISO - 50 JT - 6	ISO - 50	JT - 6	126.8	30.4	24.500	3.8	17.170	30	M24
ISO - 50 B16	ISO - 50	B16	126.8	31.6	24.000	5.0	15.733	30	M24
ISO - 50 B 18	ISO - 50	B 18	126.8	32.6	32.000	5.0	17.780	35	M24

ORDER BY : MODEL No. Eg. Drill Chuck Arbour ISO - 40 JT - 6

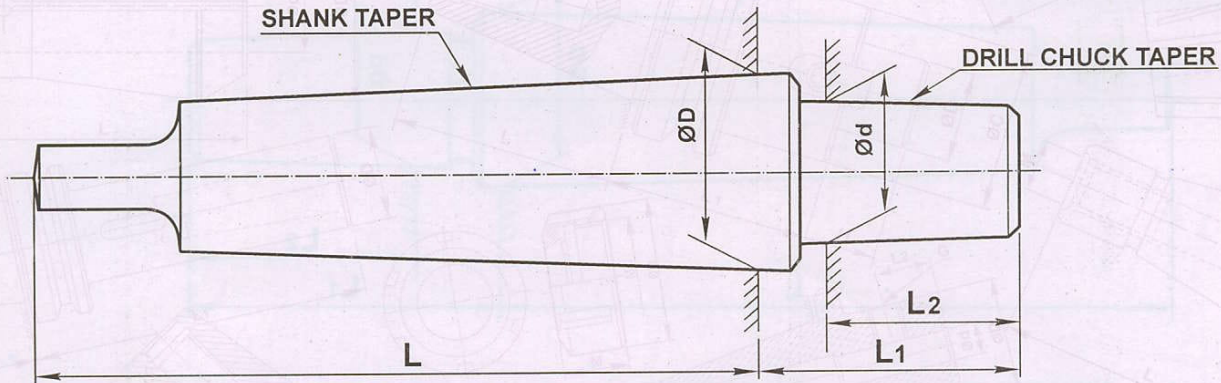


MILLING ACCESSORIES
& CNC TOOL HOLDERS

'A' GRADE

CATALOGUE No.: 114
DATE: 01 - 12 - 2006

DRILL CHUCK ARBOUR (JACOB TAPER)



- # Made from 20MnCr5. Case hardened to 55-58 HRc.
- # As per IS : 9094(1) - 1979
- # Precision ground runout 0.015 mm Max.
- # Also available : Threaded Arbours.

MODEL No.	SHANK TAPER	DRILL CHUCK TAPER	ØD mm	Ød mm	L mm	L1 mm	L2 mm
MT-1 : 1/4"(J)	MT - 1	JT - 1	12.065	9.754	62	23.5	16.67
MT-1 : 3/8"(J)	MT - 1	JT - 2	12.065	14.199	62	30.5	22.22
MT-1 : 1/2"(J)	MT - 1	JT - 6	12.065	17.170	62	33.0	25.40
MT-2 : 1/4"(J)	MT - 2	JT - 1	17.780	9.754	75	25.0	16.67
MT-2 : 3/8"(J)	MT - 2	JT - 2	17.780	14.199	75	32.0	22.22
MT-2 : 1/2"(J)	MT - 2	JT - 6	17.780	17.170	75	34.5	25.40
MT-2 : 3/4"(J)	MT - 2	JT - 3	17.780	20.599	75	41.0	30.96
MT-3 : 1/2"(J)	MT - 3	JT - 6	23.825	17.170	94	34.5	25.40
MT-3 : 3/4"(J)	MT - 3	JT - 3	23.825	20.599	94	41.0	30.96
MT-4 : 1/2"(J)	MT - 4	JT - 6	31.267	17.170	117.5	36.0	25.40
MT-4 : 3/4"(J)	MT - 4	JT - 3	31.267	20.599	117.5	42.5	30.96
MT-5 : 1/2"(J)	MT - 5	JT - 6	44.399	17.170	149.5	36.0	25.40
MT-5 : 3/4"(J)	MT - 5	JT - 3	44.399	20.599	149.5	42.5	30.96

ORDER BY : MODEL No. OR SHANK TAPER X DRILL CHUCK TAPER. Eg. Drill Chuck Arbour : MT-2 1/2" (J) OR
Drill Chuck Arbour : MT - 2 JT-6

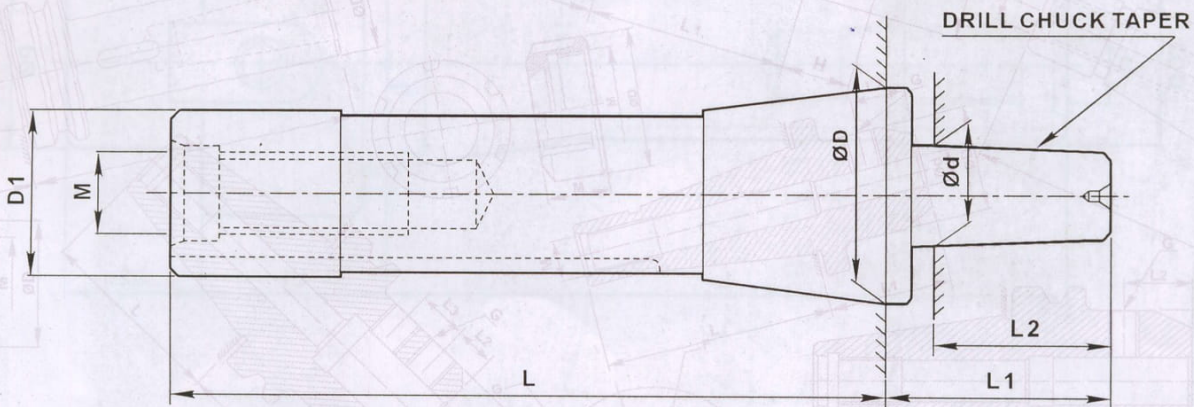


MACHINE TOOL ACCESSORIES
"A" GRADE
"HOUSE OF PRECISION TOOLS"

CATALOGUE No.: 111
DATE : 01-09 - 2004

DRILL CHUCK ARBOUR (IN R8 TAPER)

(For Bridgeport & HMT M1TR Vertical Ram Turret type Milling Machines)



MODEL No.	DRILL CHUCK TAPER	ØD mm	ØD1 mm	Ød mm	L mm	L1 mm	L2 mm	M
R8 JT - 2	JT - 2	31.750	24.1	14.199	102.3	32.7	22.22	M 12 X 15 INDIAN MARKET
R8 JT - 6	JT - 6	31.750	24.1	17.170	102.3	31.7	24.50	
R8 JT - 3	JT - 3	31.750	24.1	20.599	102.3	39.7	30.96	7 / 16" UNF REST OF THE MARKET

ORDER BY : MODEL No. eg. Drill Chuck Arbour R8 X JT - 6 (M12 X 1.5)
OR Drill Chuck Arbour R8 X JT - 6 (7/16" UNF)
Specification for Arbours with Drill Chuck Tapers
as per DIN 238 Tapers B-16, B-18, B-22, Against Request.

STANDARD: IS-1

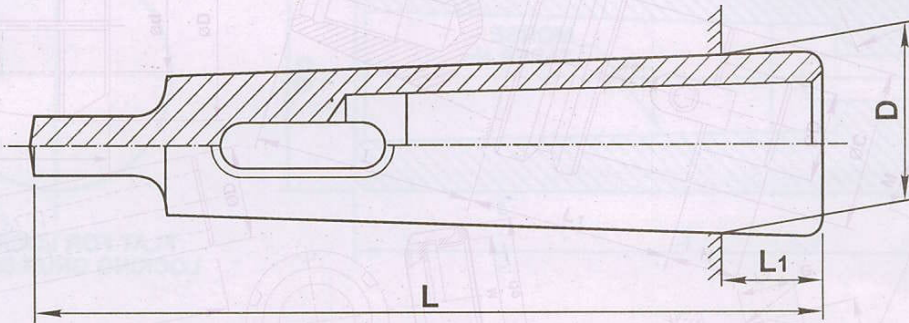


MILLING ACCESSORIES
& CNC TOOL HOLDERS

'A' GRADE

CATALOGUE No.: 115
DATE : 01 - 12 - 2006

DRILL SLEEVE



- # Made from 20MnCr5. Case hardened to 55-58 HRc.
- # As per IS : 6702 - 1972 (Equivalent to DIN : 2185 - 1972 & ISO : 238 - 1974)
- # Precision ground externally & internally.
- # Concentricity within .015 mm

MODEL No.	INNER M.T.	OUTER M.T.	L	L1	D	WEIGHT Kg.
MT0-1	0	1	80	14	12.065	0.040
MT1-2	1	2	92	17	17.780	0.100
MT1-3	1	3	99	5	23.825	0.215
MT1-4	1	4	124	6.5	31.267	0.515
MT1-5	1	5	156	6.5	44.399	1.460
MT1-6	1	6	218	8	63.348	4.600
MT2-3	2	3	112	18	23.825	0.185
MT2-4	2	4	124	6.5	31.267	0.445
MT2-5	2	5	156	6.5	44.399	1.410
MT2-6	2	6	218	8	63.348	4.700
MT3-4	3	4	140	22.5	31.267	0.380
MT3-5	3	5	156	6.5	44.399	1.230
MT3-6	3	6	218	8	63.348	4.400
MT4-5	4	5	171	21.5	44.399	1.100
MT4-6	4	6	218	8	63.348	4.000
MT5-6	5	6	218	8	63.348	3.100
MT5-7	5	7	295	9.5	83.058	8.700
MT6-7	6	7	295	9.5	83.058	5.800

ORDER BY : MODEL No. Eg. Drill Sleeve MT 2-3

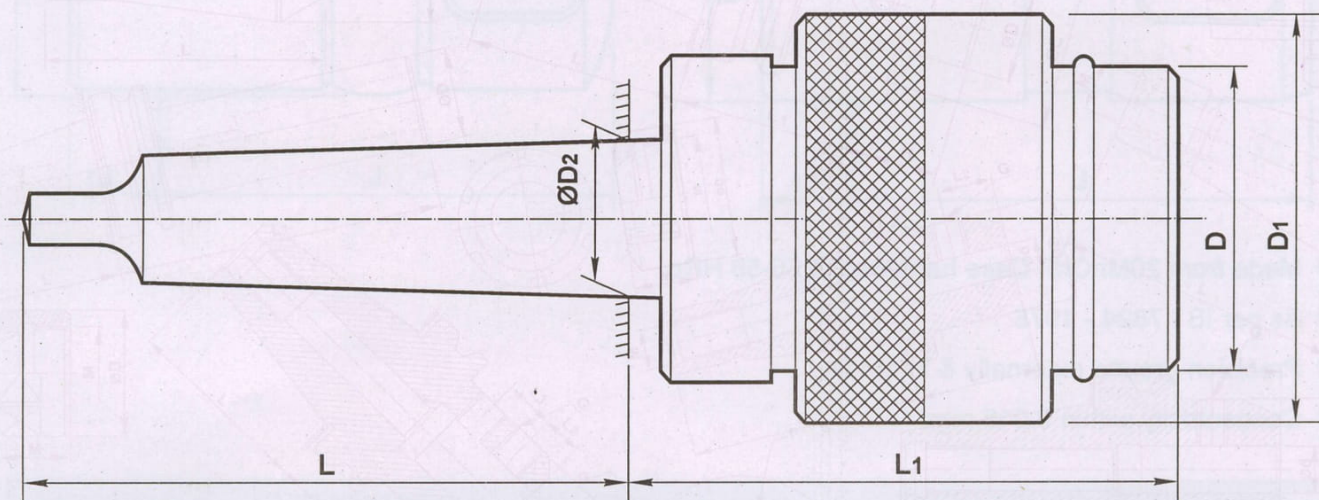


MILLING ACCESSORIES
& CNC TOOL HOLDERS

'A' GRADE

CATALOGUE No.: 116
DATE: 01 - 12 - 2006

QUICK CHANGE CHUCKS



Made from 20MnCr5. Case hardened to 55-58 HRc.

As per IS :7824 - 1975

Precision ground externally & internally.

Concentricity within 0.015 mm

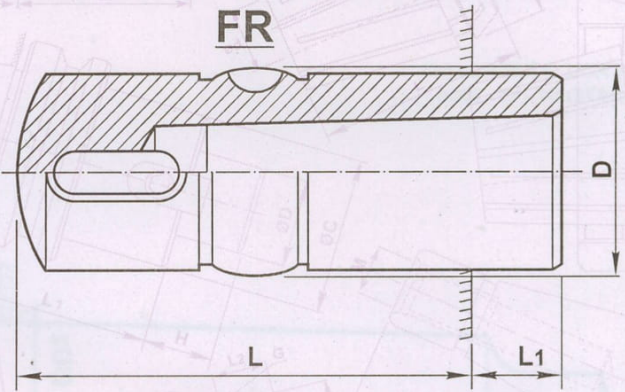
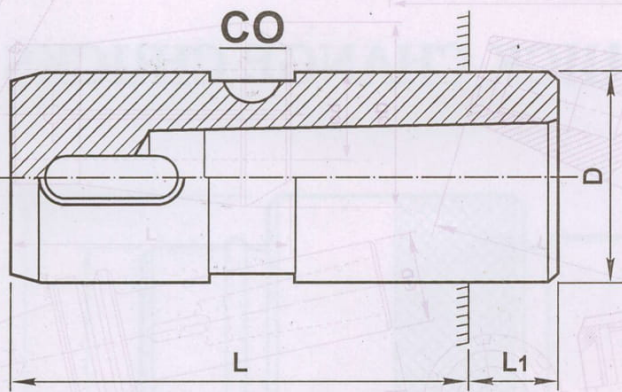
MODEL No.	L mm	L1 mm	BORE SIZE mm	D mm	D1 mm	D2 mm	SUITABLE FOR COLLETS / FR
Q.C.C. MT - 2	75.0	75.0	26.0	36.0	48.0	17.780	CO - 21, 22 FR - 21, 22
Q.C.C. MT - 3	94.0	86.0	34.0	46.0	61.0	23.825	CO - 31, 32, 33 FR - 31, 32, 33
Q.C.C. MT - 4	117.5	97.5	46.0	62.0	85.0	31.267	CO - 41, 42, 43, 44 FR - 41, 42, 43, 44
Q.C.C. MT - 5	149.5	122.5	60.0	80.0	104.0	44.399	CO - 51, 52, 53, 54, 55 FR - 51, 52, 53, 54, 55

ORDER BY : MODEL No. Eg. Q.C.C. MT - 2 OR QUICK CHANGE CHUCK MT -2



CATALOGUE No.: 116
DATE: 01 - 12 - 2006

QUICK CHANGE CHUCK COLLETS & FLOATING REAMER HOLDER



Made from 20MnCr5. Case hardened to 55-58 HRc.

As per IS : 7824 - 1975

Precision ground externally & internally.

Concentricity within 0.015 mm.

COLLET MODEL No.	FR. HOLDER MODEL No.	L mm	L1 mm	D mm	SUITABLE FOR CHUCK	INTERNAL TAPER
CO - 21	FR - 21	60	18	26	MT - 2	MT - 1
CO - 22	FR - 22	60	30	26		MT - 2
CO - 31	FR - 31	65	15	34	MT - 3	MT - 1
CO - 32	FR - 32	65	25	34		MT - 2
CO - 33	FR - 33	65	43	34		MT - 3
CO - 41	FR - 41	76	44	46	MT - 4	MT - 1
CO - 42	FR - 42	76	19	46		MT - 2
CO - 43	FR - 43	76	35	46		MT - 3
CO - 44	FR - 44	76	59	46		MT - 4
CO - 51	FR - 51	98	46	60	MT - 5	MT - 1
CO - 52	FR - 52	98	57	60		MT - 2
CO - 53	FR - 53	98	27	60		MT - 3
CO - 54	FR - 54	98	42	60		MT - 4
CO - 55	FR - 55	98	75	60		MT - 5

ORDER BY : MODEL No. Eg. CO - 21 OR FR - 31



Authorised Distributor



**SAI TRUMAN
ENTERPRISES**



09890189891 / 09373906969 / 09284480807



info@saitruman.in



www.saitruman.in



Shop No. 8, Plot No. BG-74, Jay Tulja Bhavani Industrial Complex, Near Corporation Bank, Opp. Century Enka, Telco Road, MIDC Bhosari, Pune - 411026, Maharashtra, India.